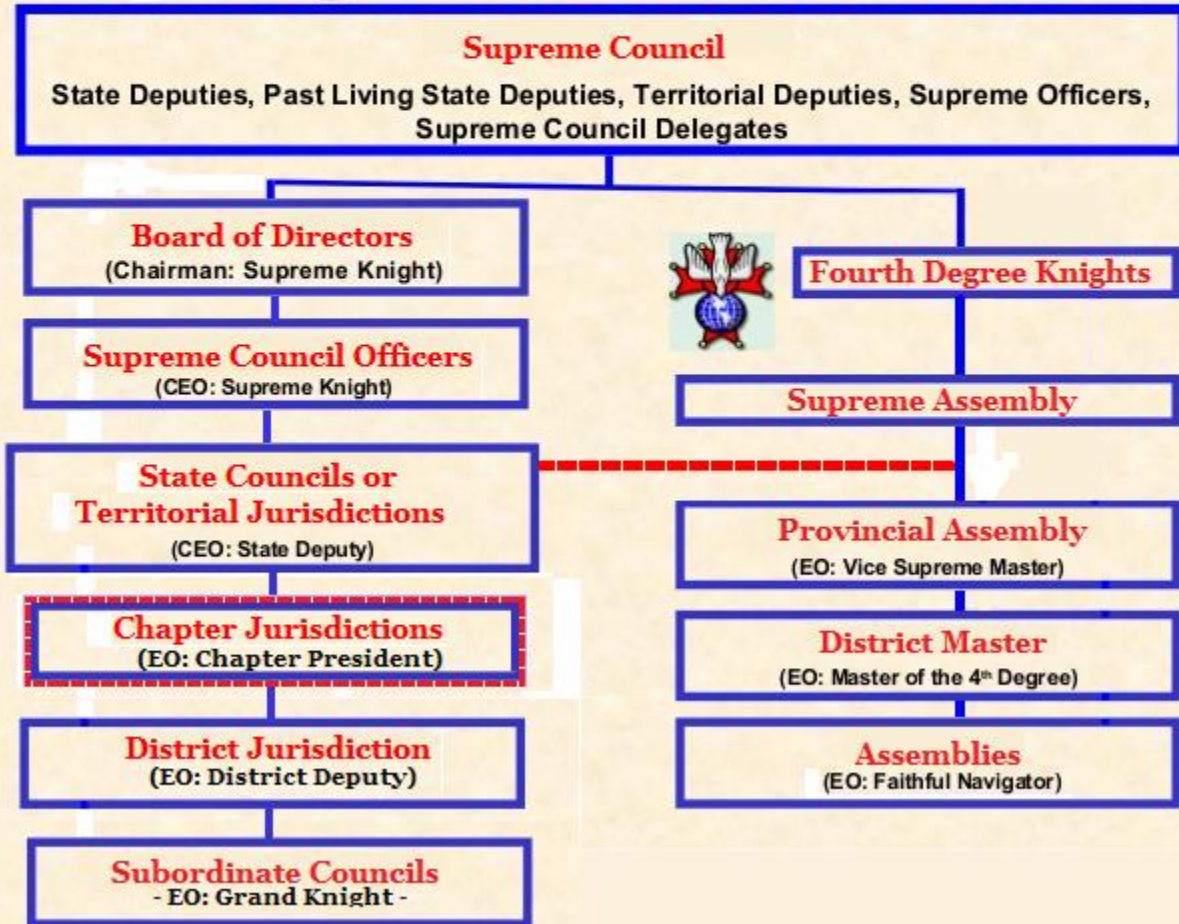




Knights of Columbus

Organizational Structure



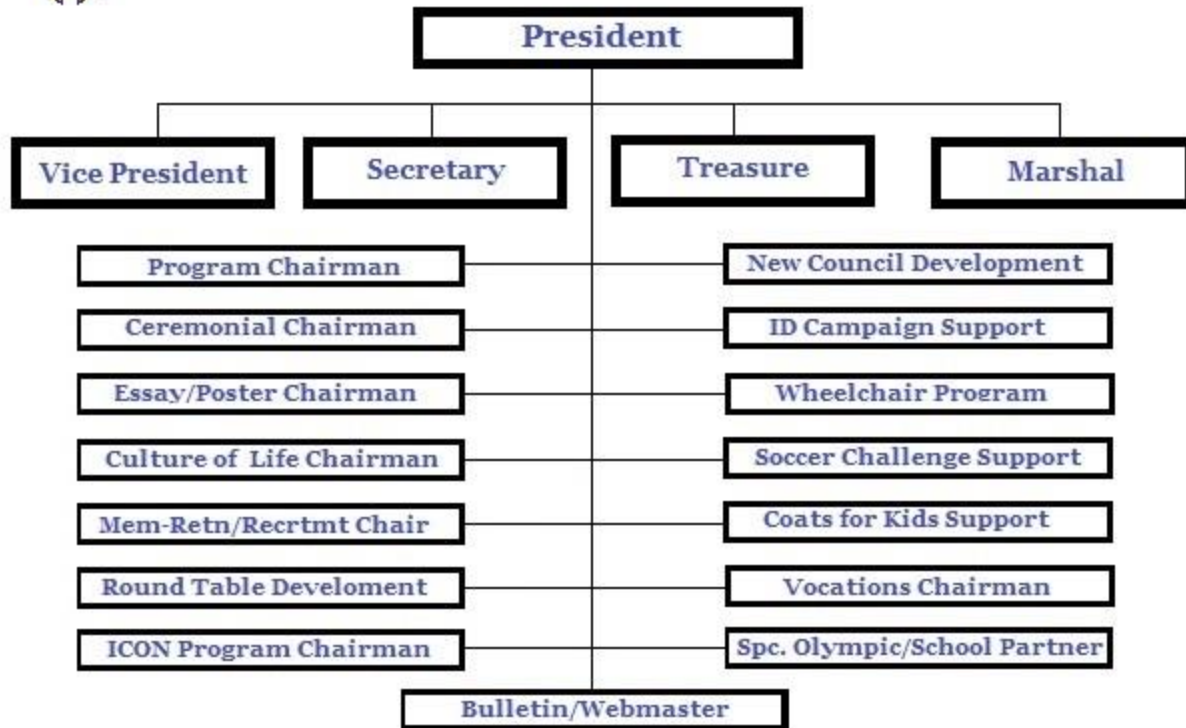
Key: CEO = Chief Executive Officer

EO = Executive Officer



Knights of Columbus

Chapter Organizational Chart



Our Chapter Website and Links:

KofC California Chapter 6 Website: <https://kofcchap6ca.org/>

KofC CA Chapter 6 District 53 Website: <https://kofcchap6ca.org/district-53/>

KofC CA Chapter 6 Councils and Assemblies Websites:

<https://kofcchap6ca.org/council-xxxxx/> or <https://kofcchap6ca.org/assembly-xxxx/>

Where you would replace **xxxxx** with your Council or Assembly number.

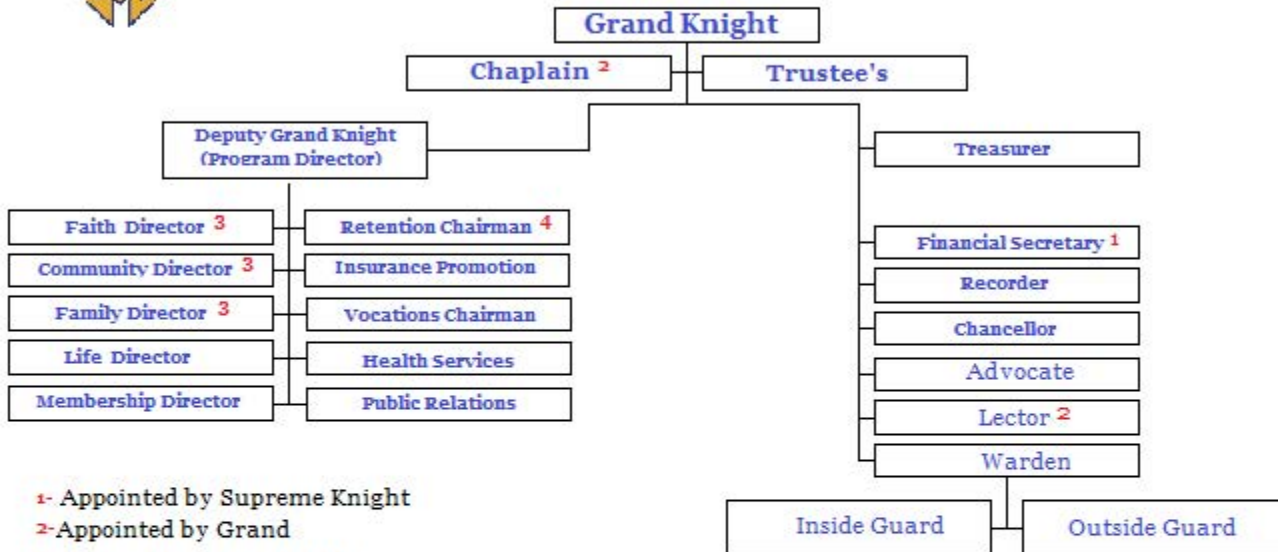
Example: Council 5303: <https://kofcchap6ca.org/council-5303/>

KofC CA Chapter 6 Assembly 3340: https://kofcchap6ca.org/assembly-3340



Knights of Columbus

Council Organizational Chart



- 1- Appointed by Supreme Knight
- 2- Appointed by Grand
- 3- Required for Star Council
- 4- Required by Supreme

California State Council Demographics

State Council has 6 Officers, 3 Supreme Representatives, and 4 Directors

(16) Chapters

(158) Districts

(719) Councils

(>79,000) Members Fourth Degree demographics

(1) Vice Supreme Master

(4) Masters

(76) Assemblies