

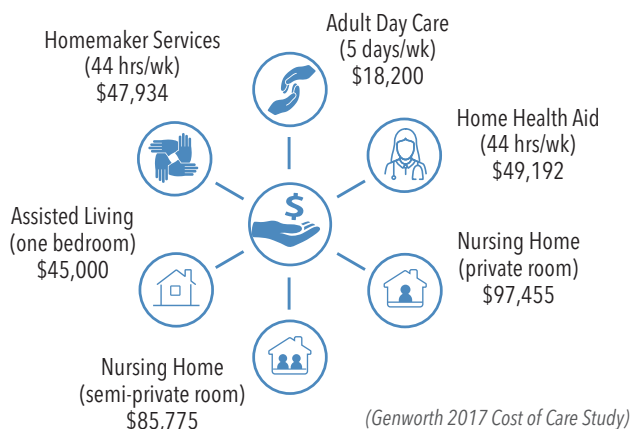


# Long-Term Care

The Knights of Columbus can help your family recover from an extended care event, whether it results from a chronic illness requiring long-term care or a move to a nursing home or assisted-living facility. The cost of an extended care event could significantly impact your ability to meet your retirement income goals. Your asset accumulation plan contributes to the income required to live comfortably during your retirement and provides extended care protection should you or a loved one ever need it.

## Cost of Long-Term Care

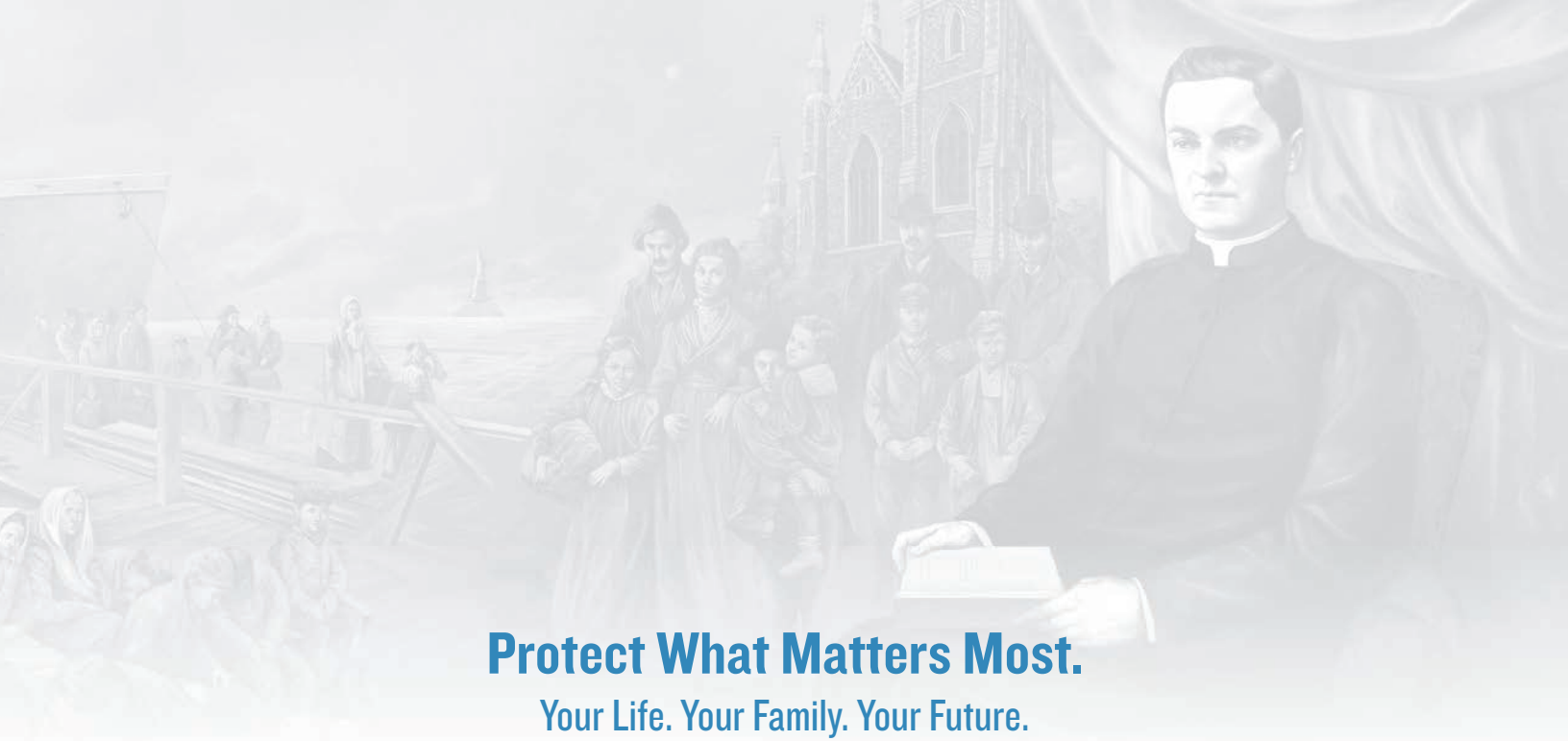
Annual Costs – National Median 2017



## Key questions to consider when it comes to extended care:

- Who will pay for the care?
- Who will provide for the care?

**KNIGHTS of COLUMBUS**  
YOUR SHIELD FOR LIFE



## Protect What Matters Most. Your Life. Your Family. Your Future.

In 1882, Father Michael J. McGivney founded the Knights of Columbus as an organization to provide for the financial security of Catholic families. Since that time, the Order has grown to include life insurance, disability income insurance, long-term care insurance, and retirement products. Meet with your field agent today and join the many other Catholic families who have benefits from Knights of Columbus insurance.

---

To learn more about our  
Fraternal Benefits and to join the  
Knights of Columbus, visit

[www.kofc.org/joinus](http://www.kofc.org/joinus)

---

This is a solicitation of insurance. Long-term care insurance is offered through **Knights of Columbus, One Columbus Plaza, New Haven, CT 06510 1-800-380-9995**. Long-term care policies have exclusions and limitations. Policy issue is subject to underwriting and a medical exam may be required. Premiums vary by issue age and benefits selected and may be increased in the future. Guarantees assume all premiums are timely paid and are based on the claims-paying ability of the issuer. For costs and complete details of coverage, please contact your agent or the Knights of Columbus.

**KNIGHTS of COLUMBUS**  
YOUR SHIELD FOR LIFE